
III. *Allegheny County* *Demographic Profile*

Demographic Profile

A demographic profile is essential to establish a snapshot of Allegany County and understand the relationship between key indicators and the local transportation system. The Allegany County Transportation Task Force must consider the following facts when planning, implementing and evaluating the Allegany County Coordinated Public Transit-Human Services Transportation Plan:

- County Geography
- Socio-Economic Status
- Population Centers
- Population Trends
- Educational Status
- Employment
- Vehicle Ownership

When feasible, the demographic profile will segment the identified priority populations; including but not limited to seniors, individuals with a disability, and those seeking employment. Neighboring county demographic information will be obtained recognizing the important role of cross-county coordination.

The following section will detail Allegany County's demographic profile. Information will be continuously updated to acknowledge changes in the environment, track and trend indicators, and predict future population trends. The Allegany County Transportation Task Force will utilize the demographic profile to appropriately plan, design and evaluate/monitor its strategies within this Plan.

A. General Description of Allegany County

Allegany County is a rural county located along the Southern Tier of Upstate New York, with an area of 1,030 square miles. It is bordered by Cattaraugus, Wyoming, Livingston and Steuben counties in New York State, and by McKean and Potter counties in Pennsylvania. The county's estimated 2005 U.S. Census population, 50,602, remained essentially unchanged from the early 1970's, with a slight projected increase of 675 from the 49,927. Allegany County is ranked 49th out of 62 counties per population. The population density is 48.47 persons per square mile.

Allegany County has twenty-nine townships and ten villages. Population concentrations are in the villages of Wellsville, Alfred, Cuba and Belmont. Due to the extensive size and rural nature of the county, transportation is a challenging issue for many living outside of the concentration areas. Opportunities for employment, quality childcare, health services, human service agency programs, educational advancement, recreation, shopping and commerce are limited due to the transportation disadvantaged.



County Population: 49,927
 County Houses: 24,505
 Land area: 1030.2 sq. mi.
 Water area: 4.2 sq. mi.

Industries providing employment:
 Educational, health and social services (32.4%),
 Manufacturing (16.7%), Retail and trade (10.1%)

Type of workers:
 Private wage or salary: 73%
 Government: 18%
 Self-employed, not incorporated: 8%
 Unpaid family work: 1%

B. Population- Those identified as transportation disadvantaged include segmented portions of the population; including but not limited to seniors and children. To design and plan interventions to meet the needs of these priority populations, it is essential to recognize the county’s population by age category.

1. Total Population by Age Category

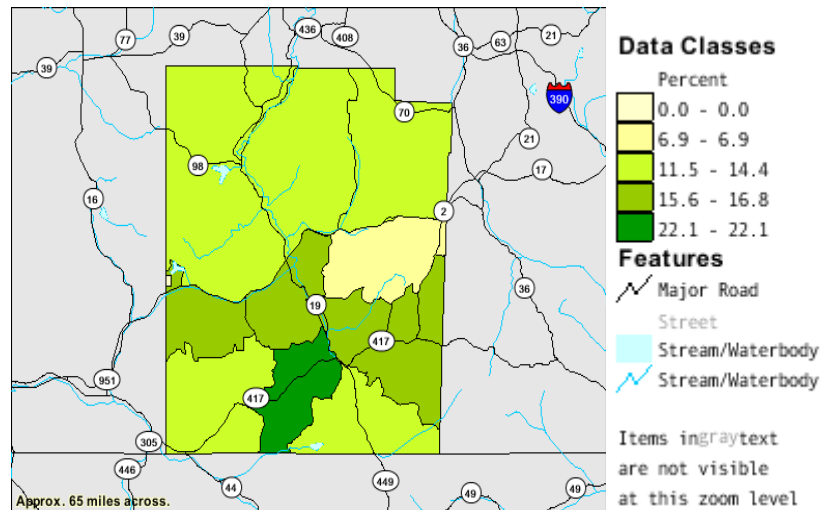
The 2000 U.S. Census showed the median age of Allegany County residents to be 35.0 years, with the male to female ratio at slightly less than 1:1. Census data also shows that 30.3% of the population is 19 years of age or younger. From 1970 to present, there has been little change in the composition of this age group. A little over fifty-five percent (55.6%) of the population is age 20-64 and 14.1% is age 65 or older.

Total population	49,927	Percentages
SEX AND AGE		
Male	24,942	50.0
Female	24,985	50.0
Under 5 years	2,798	5.6
5 to 9 years	3,267	6.5
10 to 14 years	3,866	7.7
15 to 19 years	5,250	10.5
20 to 24 years	4,737	9.5
25 to 34 years	5,040	10.1
35 to 44 years	6,902	13.8
45 to 54 years	6,505	13.0
55 to 59 years	2,431	4.9
60 to 64 years	2,131	4.3
65 to 74 years	3,748	7.5
75 to 84 years	2,328	4.7
85 years and over	924	1.9
Median age (years)	35.0	(X)

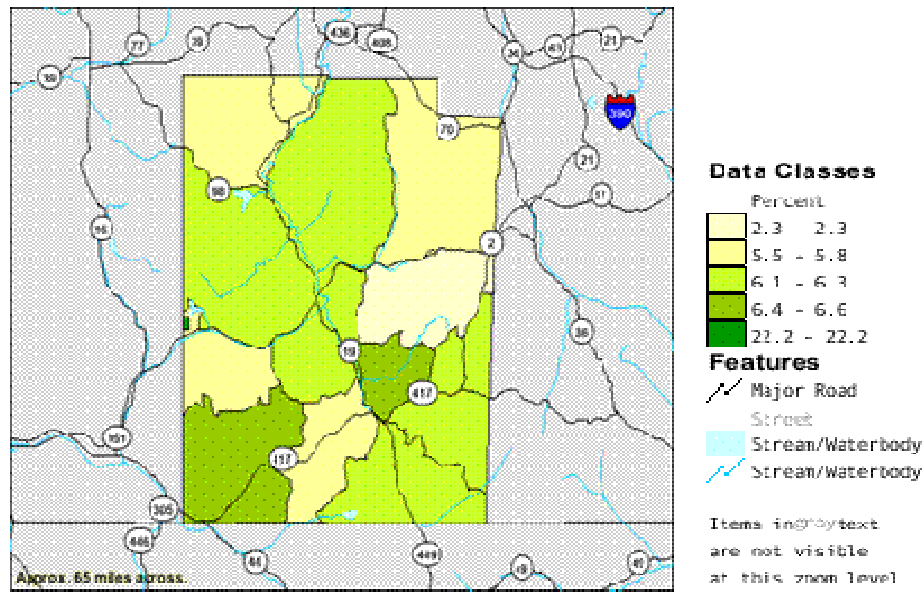
2. Total Population Geographically by Age Category

Residence location by age category demonstrates those 65 and older populating areas along Interstate 86 and in the township of Wellsville. This is consistent for health and human service provisions; hospitals, doctors, social service, and long-term care facilities. According to the Allegany County Office for the Aging, 2005 Annual Report, housing options significantly influence an elder's ability to maintain independence. 82% of Allegany County elders own their own homes. 6% (459) live in group quarters, and 11% (2,044) live alone.

Percent of Persons Over 65 Years: 2000



Percent of Persons Under 5 Years: 2000



Unlike the aging population, children under 5 years of age are not clustered according to geographic location. This will be an important element when reviewing maternal/child health indicators, and morbidity and mortality rates, i.e., transportation barriers, childcare issues and isolation.

3. **Population Trends-** Population trends provide a hypothesis of future population changes based on monitoring population shifts over time. ACTTF can utilize this data to monitor and predict priority population needs.

Population trends indicate that the population is stable, but with little growth. The data also indicates that the county’s population is living longer. In 1970, the population age 65 and over totaled 5,113. By 1994, this number had increased 40%, to 7,159, and stayed close to that rate in 2000 with 7,000. A Snapshot of Allegany County, produced by MEDSTATE Market Expert, illustrates that the fastest growing age groups are people aged 25-44 and 45-64. According to the 2000 US Census, those 65 years of age and older are twice the number of those 5 and under; 12.4% to 6.8% respectively.

Age Distribution					
Age Group	2004	% of Total	2009	% of Total	USA 2004 % of Total
0-14	8,801	17.9%	8,553	17.4%	20.7%
15-24	10,407	21.2%	10,295	20.9%	14.2%
25-44	11,304	23.0%	10,750	21.9%	28.9%
45-64	11,650	23.7%	12,358	25.1%	23.7%
65+	6,990	14.2%	7,220	14.7%	12.5%
Total	49,152	100.0%	49,176	100.0%	100.0%

4. Individuals with Disabilities- Individuals with disabilities are a priority population identified by the Allegany County Coordinated Public Transit-Human Services Transportation Plan. ACTTF efforts must embrace those with self-care and mobility limitations when designing, implementing and evaluating the Plan.

DISABILITY OF CIVILIAN NONINSTITUTIONALIZED PERSONS	
Persons 16 to 64 years	32,051
With a mobility or self-care limitation	908
With a mobility limitation	560
With a self-care limitation	590
With a work disability	2,863
In labor force	1,057
Prevented from working	1,442

Source: US Census Bureau - 2000 Census

C. Socio-Economic Levels

Income levels and poverty are a contributing factor to those considered transportation disadvantaged. Costs of quality, safe vehicles, car insurance, rising costs of gasoline and the necessity to travel great distances for gainful employment, childcare and educational advancement are all inter-related.

1. Income Levels

Income levels in Allegany County are among the lowest in the state. The 2000 Census showed the county's per capita income as \$14,975, with median household income at \$32,106. The New York State median household income was \$41,763 in 2000, while the national figure was \$41,990.

The percentage of residents living below 100% of poverty is 15.5%, is up from 13.3% in the 1990 Census. A total of 13.2% of New Yorkers live at or below the poverty level, while 11.3% nationally live at or below poverty level. The percentage of families with children under 5 years living in poverty is 23%, while the number of families with a female householder and no male present, and related children under 5 years living under poverty is 59.8% The total number of children living in poverty in Allegany County is 20.9% while the New York State rate is 19.1%., and the national rate is 16.2%.

INCOME IN 1999	Allegany County	%
Households	18,056	100.0
Less than \$10,000	2,190	12.1
\$10,000 to \$14,999	1,739	9.6
\$15,000 to \$24,999	3,118	17.3
\$25,000 to \$34,999	2,725	15.1
\$35,000 to \$49,999	3,380	18.7
\$50,000 to \$74,999	2,974	16.5
\$75,000 to \$99,999	1,177	6.5
\$100,000 to \$149,999	529	2.9
\$150,000 to \$199,999	79	0.4
\$200,000 or more	145	0.8
Median household income (dollars)	32,106	(X)

Source: US Census Bureau-2000 Census

The Bureau of Economic Analysis shows a per capita income in Allegany County for 2002 of \$19,925 which ranks us 62nd of the 62 counties and is only 56% of the state average per capita income of \$35,805 and 64% of the national average income of \$30,906.

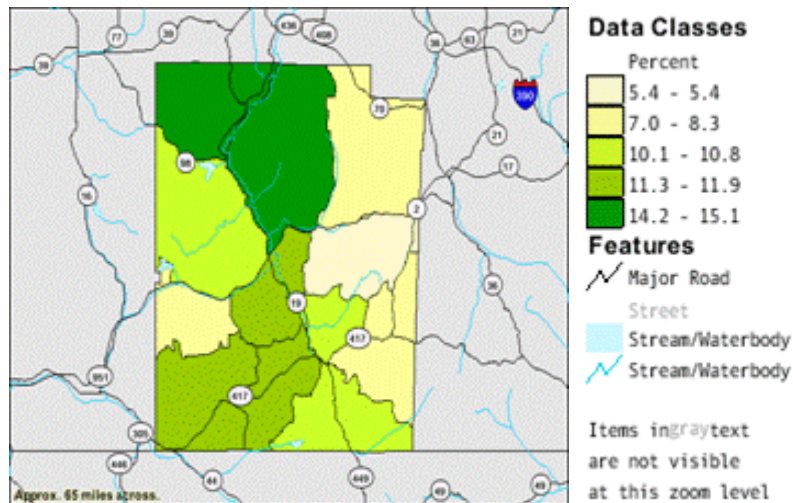
The Bureau also reported that the 1992-2002 average annual growth rate of total personal income was 3.2% for Allegany County, 4.2% for New York State and 5.2% nationally. This slowed growth rate contributes to our last place state ranking of per capita income in 2002.

2. Poverty Status, Geographic Concentration

As seen in the following charts and GIS mapping, families living in poverty also are those most geographically isolated and dependent upon quality transportation.

POVERTY STATUS IN 1999	Below Poverty Level	Percentages
Families	1,287	(X)
Percent below poverty level	(X)	10.5
With related children under 18 years	1,020	(X)
Percent below poverty level	(X)	17.2
With related children under 5 years	462	(X)
Percent below poverty level	(X)	23.0

Percent of Families Below the Poverty Level 1999:2000



D. Educational Status

1. Educational Institutions- Educational institutions should be recognized as part of the local county transportation system providing transportation services to children, one of the priority populations identified in the Plan. Allegany County encompasses twelve public and three private school districts including:

Public School Districts	Private Schools
Andover Central School	Houghton Academy
Alfred-Almond Central School	Immaculate Conception School
Belfast Central School	Center Point Christian Academy
Bolivar-Richburg Central School	
Canaseraga Central School	
Cuba-Rushford Central School	
Fillmore Central School	
Friendship Central School	
Genesee Valley Central School	
Scio Central School	
Wellsville Central School	
Whitesville Central School	

In addition, Allegany County hosts three higher learning institutions including Alfred University, Alfred State College, and Houghton College; approximate enrollment reported at 2,400, 3,000 and 680 respectively, each with an internal transportation system for student use.

2. Educational Attainment- The direct correlation between educational attainment and transportation is significant. Those seeking to advance their educational levels must have reliable transportation to attend GED classes, adult literacy programming, vocational training, and/or to achieve higher education degrees.

The 2000 U.S. Census showed that 16,263 persons age three years or over were enrolled in school. Among these, 3.8% were in preschool, 59.2% were in Kindergarten through 12th grade, and 37% were in college. Educational attainment status was available on 30,010 people, 25 years and over, who had ever been enrolled in school. Of these, 16.8% have less than a high school diploma or equivalency degree, with 4.8% having less than a 9th grade education. Of those ever-enrolled in school, 27.4% have an advanced degree with the following breakdown, 10.2% have an Associate's Degree, 8.7% have a Bachelor's Degree and 8.5% hold a Graduate or Professional Degree. The high school dropout rate for Allegany County is 16.8%, while the New York State rate is 20.9%.

As reported by the US Census Bureau Report, Educational Attainment in the United States: 2003 the average earnings in 2002 for the population 18 years and over were higher at each progressively higher level of education. This relationship holds true not only for the entire population but also across most subgroups defined by sex, race, and Hispanic origin. Similar educational attainment levels and poverty status are reflected in Allegany County in the following table.

EDUCATIONAL ATTAINMENT		
Population 25 years and over	30,010	100.0
Less than 9th grade	1,450	4.8
9th to 12th grade, no diploma	3,591	12.0
High school graduate (includes equivalency)	11,897	39.6
Some college, no degree	4,859	16.2
Associate degree	3,057	10.2
Bachelor's degree	2,620	8.7
Graduate or professional degree	2,536	8.5
Percent high school graduate or higher	83.2	(X)
Percent bachelor's degree or higher	17.2	(X)

Source: U.S. Census Bureau, Census 2000 Summary File 3, Matrices P18, P19, P21, P22, P24, P36, P37, P39, P42, PCT8, PCT16, PCT17, and PCT19

According to the Economic Characteristics listed in the 2000 Census 7,066 individuals were living below the poverty level equaling 15.5% of the total Allegany County population. The census also indicates that 56.4% of the population 25 years of age or older does not hold an educational degree higher than a high school diploma or it's or equivalency.

E. Employment- Gainful employment is essential to self-efficiency. Transportation barriers to and from one’s worksite may prohibit one from being hired or maintaining their employment status. As well, employers may be significantly impacted by workforce limitations due to transportation barriers negatively affecting recruitment and retention of quality employees.

1. Employment Status

Subject	Number	Percent
EMPLOYMENT STATUS		
Population 16 years and over	39,335	100.0
In labor force	23,645	60.1
Civilian labor force	23,621	60.1
Employed	21,494	54.6
Unemployed	2,127	5.4
Percent of civilian labor force	9.0	(X)
Armed Forces	24	0.1
Not in labor force	15,690	39.9
Females 16 years and over		
Females 16 years and over	19,828	100.0
In labor force	10,797	54.5
Civilian labor force	10,792	54.4
Employed	9,974	50.3
Own children under 6 years		
Own children under 6 years	3,254	100.0
All parents in family in labor force	1,970	60.5
Employed civilian population 16 years and over		
Employed civilian population 16 years and over	21,494	100.0
OCCUPATION		
Management, professional, and related occupations	6,727	31.3
Service occupations	3,778	17.6
Sales and office occupations	4,596	21.4
Farming, fishing, and forestry occupations	407	1.9
Construction, extraction, and maintenance occupations	2,112	9.8
Production, transportation, and material moving occupations	3,874	18.0
INDUSTRY		
Agriculture, forestry, fishing and hunting, and mining	813	3.8
Construction	1,356	6.3
Manufacturing	3,588	16.7
Wholesale trade	510	2.4
Retail trade	2,176	10.1
Transportation and warehousing, and utilities	866	4.0
Information	461	2.1
Finance, insurance, real estate, and rental and leasing	505	2.3

Subject	Number	Percent
Professional, scientific, management, administrative, and waste management services	810	3.8
Educational, health and social services	6,971	32.4
Arts, entertainment, recreation, accommodation and food services	1,597	7.4
Other services (except public administration)	1,064	5.0
Public administration	777	3.6
CLASS OF WORKER		
Private wage and salary workers	15,663	72.9
Government workers	3,960	18.4
Self-employed workers in own not incorporated business	1,749	8.1
Unpaid family workers	122	0.6

Source: US Census Bureau – 2000 Census

F. Vehicles- Individuals who require public transportation services may also be those who do not have access to or have ownership of a vehicle. Data pertaining to vehicle ownership may assist ACTTF to identify a target audience for marketing and research for public transportation services.

1. Commuting to Work

Subject	Number	Percent
COMMUTING TO WORK		
Workers 16 years and over	21,021	100.0
Car, truck, or van – drove alone	14,922	71.0
Car, truck, or van -- carpooled	2,461	11.7
Public transportation (including taxicab)	156	0.7
Walked	2,433	11.6
Other means	195	0.9
Worked at home	854	4.1
Mean travel time to work (minutes)	21.8	(X)

Source: US Census Bureau – 2000 Census

2. Vehicle Ownership

Subject	Number	Percent
Total housing units	24,505	100.0
VEHICLES AVAILABLE		
None	1,536	8.5
1	6,466	35.9
2	7,430	41.3
3 or more	2,577	14.3

Source: US Census Bureau – 2000 Census